



# AUTOMOTIVE STATIC CLING WINDOW TINT INSTALLATION INSTRUCTIONS

## | SIDE ROLL DOWN WINDOWS



### TOOLS NEEDED (SOLD SEPARATELY)

- For best results use the GILA® Complete Window Film Application Kit (Item #50146241 / Model #FS600)
- GILA® Window Film Application Solution
- Low-lint cloth
- Utility knife (for cutting film)
- Squeegee or squeegee card

*Included in the GILA Complete Window Film Application Kit.*

### ADDITIONAL ITEMS NEEDED

- Single-edged razor blade (for cleaning glass)
- Tape measure

### CAUTION

- Dark tinting may reduce visibility outside during poor lighting conditions. Use care to avoid accidents
- Use caution when handling sharp objects

For additional information, call 1-800-851-4481 or visit the Contact Us section of [www.gilafilms.com](http://www.gilafilms.com).

### HELPFUL HINTS

- Refer to [www.gilafilms.com](http://www.gilafilms.com) for comprehensive and updated support materials including frequently asked questions, product data and installation videos.
- The GILA® application solution will serve as a lubricant for the squeegee during glass cleaning, application, and future cleaning after installation.
- Change the utility knife blade after each window is tinted.
- Start with the smallest flat window first to become comfortable handling the film.
- Apply film in a shaded, well-lit, dust-free environment.
- Apply film with the air temperature is between 40°F and 100°F for at least three days.
- Handle the film carefully to prevent creasing.
- Installation is easier with two people.
- Rinse fingertips clean and keep them wet when handling the film to avoid leaving fingerprints on the surface of the film during installation.

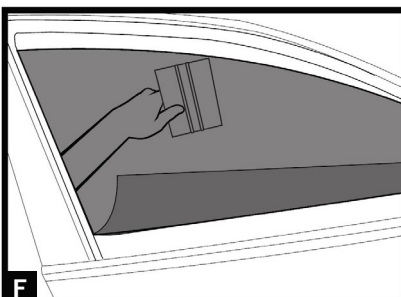
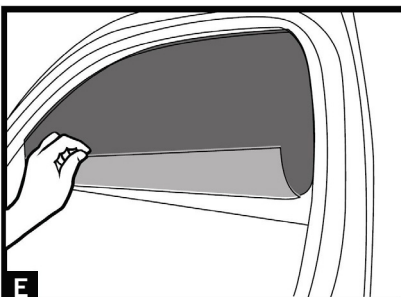
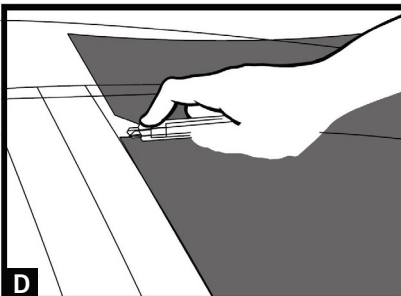
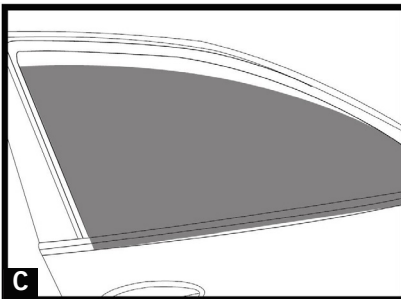
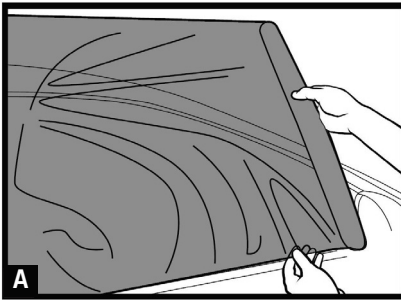
### TINT LAWS

Most states permit some tinted windows. Laws differ from state to state regarding window tint light transmission and reflectance percentages.

**BEFORE** installing **ANY** window film on **ANY** vehicle, check with your state police and comply with applicable tint laws. The manufacturer and retailer assume no responsibility for the misuse, illegal or improper application of window film. Visit the following website to review your state's laws: [www.iwfa.com/news-events/state-law-charts](http://www.iwfa.com/news-events/state-law-charts)

### WHERE NOT TO APPLY

- **DO NOT** apply any automotive window films to residential windows.
- **DO NOT** apply film to glass containing holes, or to frosted, etched, leaded, cracked, deeply scratched, flawed or otherwise defective glass.
- **DO NOT** apply film to Plexiglas, plastic or acrylic windows.
- Many new automotive vehicles have plastic windows in certain locations.  
***Do not apply window film to these special windows***
- **DO NOT** apply to the front windshield.



## 1 CLEAN THE WINDOW THOROUGHLY

The cleaner the glass, the better the finished application will look.

- **DO NOT** use ammonia, vinegar, or household glass cleaners to clean the glass immediately prior to film application.
- Spray the solution on the inside and outside surface of the window.
- Carefully use a razor blade to scrape away dirt or residue from the glass.  
**CAUTION: Do not use razor scraper or any sharp tools on the inside surfaces of glass with printed electrical wires such as defroster or antenna wires.**
- Be sure to wipe down all gaskets where dirt may be trapped.
- Re-spray and clean both surfaces of the glass.
- Use a squeegee to dry the surface.

## 2 TRIM THE TINT

- Measure your window and cut a piece of film large enough to cover the window.
- Wet the outside of the window with application solution then roll the film onto the exterior of the glass (final installation will be done on the interior). **(FIGURE A)**
- Remove the paper liner (**DO NOT WET liner**).
- Spray the film and temporarily squeegee into place.
- Trim away the excess film roll. **(FIGURE B)**
- For roll down windows, position the film so that the straight bottom edge extends about 1/4" to 1/2" below the top of the inside gasket. **(FIGURE C)**
- Wet the outside of the film with the application solution.
- Squeegee gently down the film to temporarily hold it in place for trimming.
- Use the utility knife to trim the vertical edges first.  
**NOTE: When using a utility knife on glass always use very light pressure to avoid glass damage. Always tear excess film away from you.**
- Before trimming the top, open the door and gently lift the bottom edge of the film from the glass. Do not remove the film entirely from the glass. Reach inside and roll the window down about 2".
- Using the top of the window as your blade's guide, trim the film to the edge of the glass. **(FIGURE D)**

## 3 APPLYING THE TINT

- Spray the inside of the window as well as the recently trimmed tint generously with the application solution.
- Wet your fingers with application solution then carefully lift the film from the outside of the glass.
- Place the wet side of the film against the wet inside glass.
- Before you position the film on the glass, fold up the bottom edge so it does not touch the door and pick up any dirt. **(FIGURE E)**
- Slide the film into place, leaving about 1/8" to 1/4" gap at the top on roll up windows.
- Spray the outside of the film with the application solution.
- Squeegee the top of the film firmly onto the glass (Do not squeegee the bottom portion of the film yet). **(FIGURE F)**
- Roll up the window.
- To ensure the bottom of the glass is clean, re-spray with the application solution and squeegee. Wet the window again and unfold the film down onto the glass. Slip the bottom of the film under the gasket.
- Using the edge of the squeegee, pull back the gasket so that the film will slide easily behind it. With your fingers and the squeegee as guides, run the film under the gasket completely, being careful not to crease it.
- Once the film is tucked under the gasket, squeegee firmly downward until all the water is pushed out from under the film. Push any bubbles that remain under the film to the nearest edge.
- To finish, wrap the low-lint cloth around the hard edge of the squeegee, and firmly push the application solution down the nearest edge. The cloth will absorb any excess solution and keep it from creeping back up under the film.

### POST YOUR RESULTS!

Great work. You have successfully applied your window tint. Please share your photos with us on our Facebook page, [facebook.com/gilafilms.com](https://facebook.com/gilafilms.com). For more information on other products, please visit our website: [gilafilms.com](https://gilafilms.com)

### CURING TIME

The film fully “cures” over the next week to 10 days. Dry, sunny weather speeds curing; wet, cold weather prolongs it. During curing, the film may initially look hazy or cloudy; this effect will disappear with time and/or exposure to heat (i.e. the sun or a hair dryer).

### CLEANING AND CARE

Clean the film with application solution, squeegee card and low-lint cloth. It is safe to use ammonia-based cleaners if the cleaner sits on the film for no more than two minutes.

### REMOVAL

Static cling films are easy to remove. Removal is as easy as peeling the film away from the glass.

### LIMITED WARRANTY

Eastman Performance Films, LLC (“the Manufacturer”) warrants GILA® window films against manufacturing defects for a period of two years from the date of original purchase with the exception of Heat Shield™ Elite automotive products that are warranted for a three (3) year period from the date of original purchase. If any product fails to conform to the foregoing limited warranty, and the purchaser submits a valid warranty claim during the warranty period set forth above, the purchaser may be eligible for replacement product at no charge. Original proof of purchase and an explanation of the manufacturing defect will be required to substantiate any warranty claim. It is therefore recommended that the purchaser retain the sales receipt. In addition, we reserve the right to request samples of the defective window film to substantiate any warranty claim. For complete warranty information or to submit a claim, please visit the Warranty section at [www.gilafilms.com](https://www.gilafilms.com).

### CORRECTING MISTAKES

You may notice imperfections such as air bubbles or debris between the film and the glass. Static Cling films allow you to peel the film away from the glass, fix the problem, and re-apply any time after your installation. Simply peel the affected area of film away from the glass, spray with application solution, and use your squeegee or knife to remove any debris or bubbles. Re-spray under the film with application solution and re-apply to the glass. Once applied, re-spray the outer surface of the film and re-squeegee.

### CUSTOMER SUPPORT

Consumer Service: 1-800-528-4481

Available 24 hours, 7 days a week

Email: [gila@eastman.com](mailto:gila@eastman.com)

Web: [www.gilafilms.com](https://www.gilafilms.com)

Mail: Eastman Performance Films, LLC

575 Maryville Centre Dr.

Saint Louis, MO 63141

Attn: Gila Window Films